

# ANNUAL REPORT 2018-2019



# WESTERN MONTANA AHEC

The Western MT AHEC, at the University of Montana, in Missoula, was established in 2008. WMT-AHEC is part of the College of Health Professions and Biomedical Sciences at the University of Montana-Missoula and is located at the Missoula College Campus. WMT-AHEC is closely affiliated with the 13 health professions programs offered through the University of Montana Health & Medicine (UMHM) programs. WMT-AHEC serves the following Western counties: Flathead, Lake, Lincoln, Mineral, Missoula, Sanders, and Ravalli.

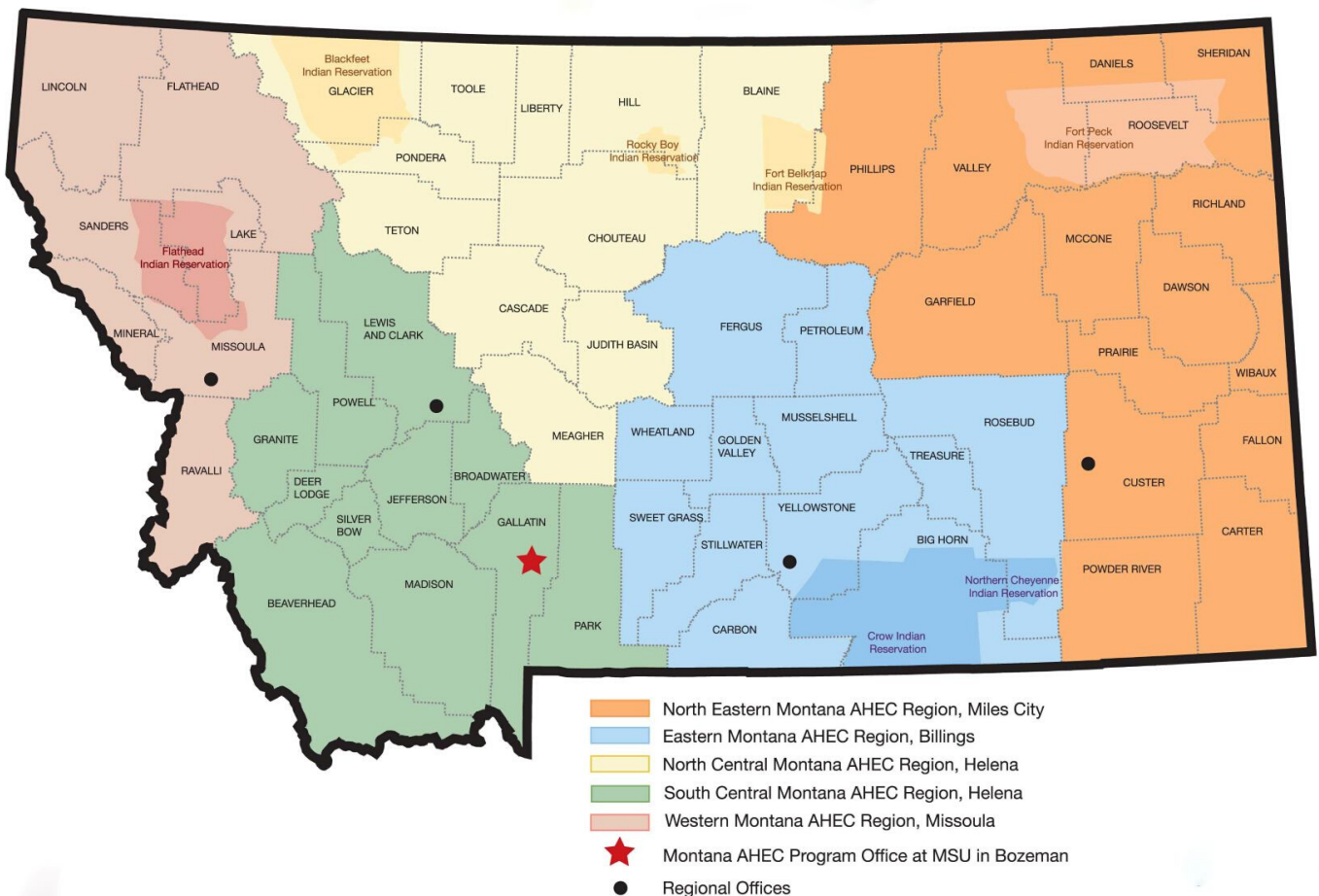
## MISSION

The AHEC Mission is to enhance access to quality healthcare, particularly primary and preventative care, by improving the supply and distribution of healthcare professionals via strategic partnership with academic programs, communities, and professional organizations.

## GOAL

A diverse, culturally competent primary care/healthcare workforce representative of Montana communities, that is prepared to deliver high quality care in a transforming system and is distributed throughout the state, particularly in rural and underserved areas and populations.

## Montana AHEC Regions



# MESSAGE FROM THE DIRECTOR



Welcome to the Western Montana Area Health Education Center (WMT-AHEC). At WMT-AHEC we endeavor to make quality health science education and healthcare services accessible to all of Montana. The rural nature of Montana presents a challenge for all five Area Health Education Centers in Montana with offices in Billings, Bozeman, Helena, Miles City and Missoula. Currently, 52 of the 56 Montana counties are federally designated as medically underserved areas. The Montana Area Health Education Centers exist to provide services to these underserved counties.

Dramatic changes in healthcare make our work both challenging and exciting. Despite these changes, ongoing collaboration with local and state agencies, healthcare facilities, and the Montana University System enables WMT-AHEC to provide exceptional programs to the 7-county western region of Montana and beyond. Please read more about WMT-AHEC programs. We encourage students, teachers, and health professionals to contact our staff or visit our office located at Missoula College, Missoula, MT.

**Barry Kenfield**  
**WMT-AHEC**  
**Director**



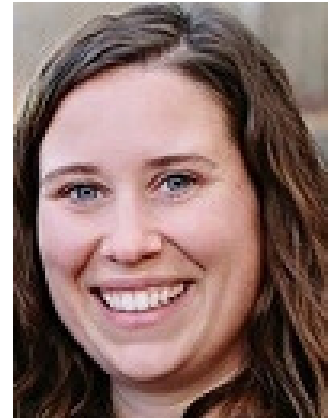
# WESTERN MONTANA AHEC TEAM



**Ilsa Seib,  
Director of  
Budgets and  
Personnel**



**Kaye Norris,  
State Director  
AHEC Scholars**



**Liz Kelsey,  
WWAMI  
Coordinator**



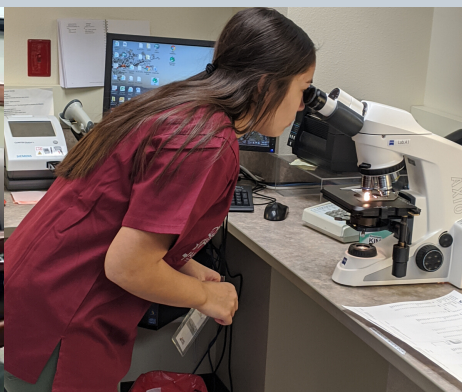
**Robin Mochi  
Continuing  
Education  
Coordinator**



**Bonnie Bishop,  
AHEC Scholars  
and MUS IPE  
Institute Program  
Manager**



**Lily Apedaile,  
Career  
Awareness  
Coordinator**



# OUR PROGRAMS

## **First Shift**

A day-long event hosted in various communities in Western Montana that introduces non-traditional students to entry-level healthcare careers.

## **Heads-Up Camp**

A 2-day behavioral health science camp offered, free-of-charge, throughout the state. Eight hours of Mental Health First Aid certification training is offered as well as exposure to a myriad of behavioral health career pathways.

## **MedStart**

A week-long summer camp for high school students hosted at the University of Montana that focuses on healthcare degrees and careers.

## **REACH**

A ½ day-long camp for high school students that is hosted at a local hospital or on the University of Montana campus that engages students in hands-on healthcare-related activities.

## **Friday Medical Conference**

Friday Medical Conference (FMC) is a weekly Continuing Medical Education (CME) opportunity for physicians, healthcare professionals, and several healthcare student programs. This 'Grand Rounds' style lecture series provides a cross-section of recent advances in medicine along with clinical etiology, diagnosis, and management information.



# OUR PROGRAMS (CONT.)

## **Pain Conference**

The Montana Pain Conference utilizes an interdisciplinary approach, the conference focuses on sharing innovations in chronic pain care. With an emphasis on effective pain assessment, special attention is paid to research, education, and advocacy. Effective pain management aims to empower providers and patients as they navigate complex treatment needs.

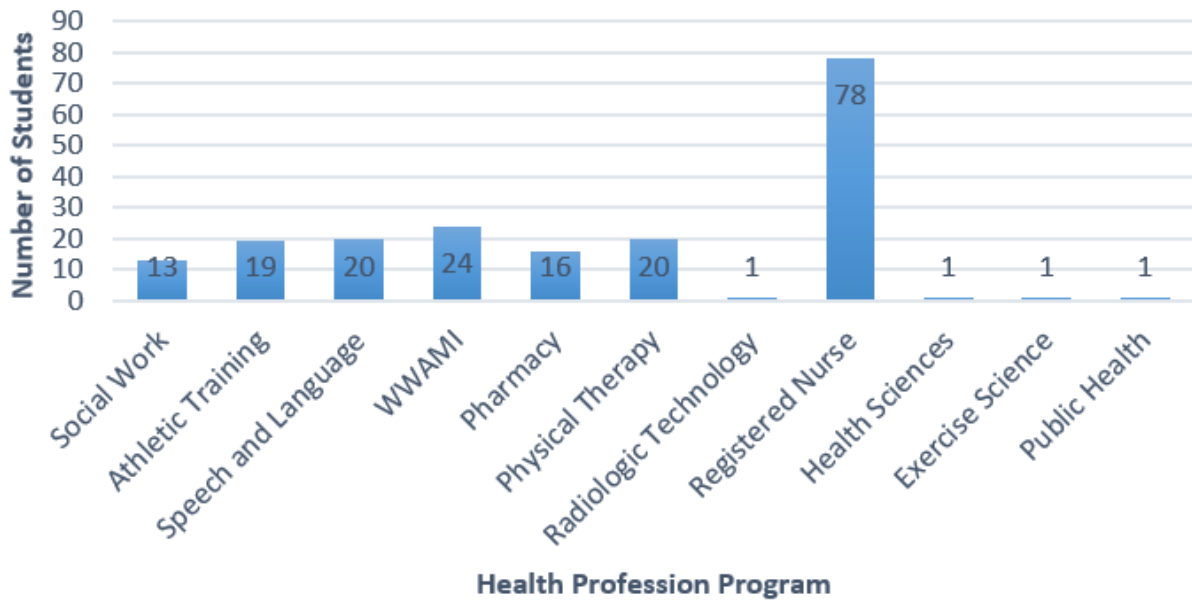
## **WWAMI**

WWAMI is a cooperative program of the University of Washington School of Medicine and the states of Wyoming, Alaska, Montana and Idaho. It is a program which makes medical education accessible to students in the northwestern United States by decentralizing the educational process and by sharing existing facilities and personnel in universities and communities in the WWAMI states

## **Rural Clinical Rotations**

Supports health professions students participating in clinical rotations at rural and underserved sites in Montana. Students will receive travel reimbursement for personal car mileage. Clinical rotations must be at a Critical Access Hospital (CAH), a rural health clinic, a tribal health service, or a Community Health Center (CHC) in Montana.

## AHEC Scholars Program 2018-2019



# AHEC SCHOLARS

## About

A 2 year interprofessional program for health profession students across Montana.

- Program administrated by Montana State University and University of Montana AHEC Programs
- Co-created and co-taught by faculty and staff from across the state
- Open to graduate level, 2 or 4 year undergraduate, and certificate programs for any healthcare career
- Courses can be continuing education modules or college credit

## IPE Topics

- Interprofessional Education
- Behavioral Health Integration
- Social Determinants of Health
- Cultural Competency
- Practice Transformation
- Current and Emerging Health Issues

## Certification

A certification as an AHEC Scholar will signify that the student has additional knowledge, skills, and experiences that will give them an advantage in moving forward in their chosen health profession.

## Benefits

- Learn to work effectively in a team-based setting
- Develop new skills, experiences, and strategies to improve both access and delivery of healthcare
- Have the chance to meet leaders in healthcare and interact with health care professionals creating an invaluable network for your future career
- Make connections with other participants
- Receive a certification, which will set you apart from other students in an increasingly competitive environment
- Receive recognition at graduation

**RURAL  
CLINICAL  
ROTATIONS**

**6**

**Clinical Rural Sites**

**14**

**Health Professions  
Students Supported**

**\$3,135**

**Dollars Disbursed**

**10,451**

**Miles Travelled**

**WWAMI  
CLERKSHIPS/  
ROTATIONS**

**8**

**Different training sites**

**96**

**Clerkships/  
Rotations/Electives**

**45**

**Medical students  
participated**

**21**

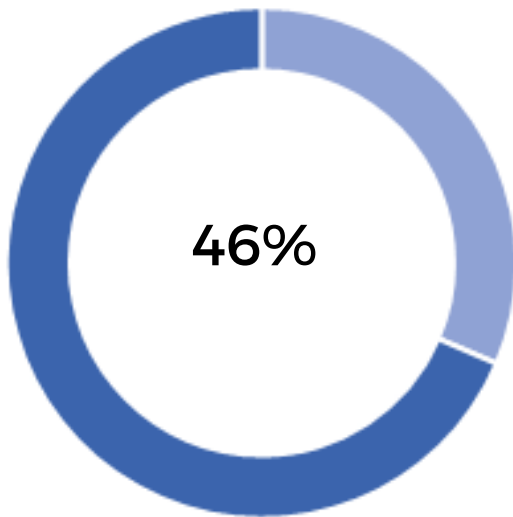
**Medical students from  
a rural background**



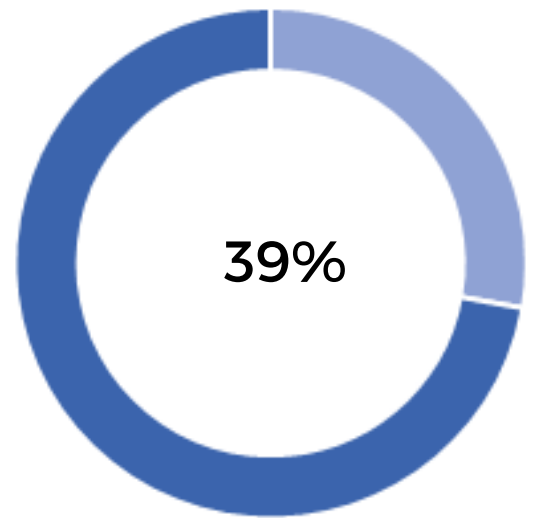
# Career Awareness Programs



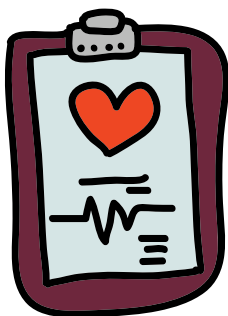
**382 Structured Program Participants**



from a rural background



from a disadvantaged background



**1,142 Hours of Structured Activities**

# Pre-Med/Pre-PA Job Shadowing

**78 Job  
Shadowing  
Experiences**

**25  
Different  
Specialties  
Shadowed**

**324 Hours  
of Job  
Shadowing**

# Continuing Education Programs



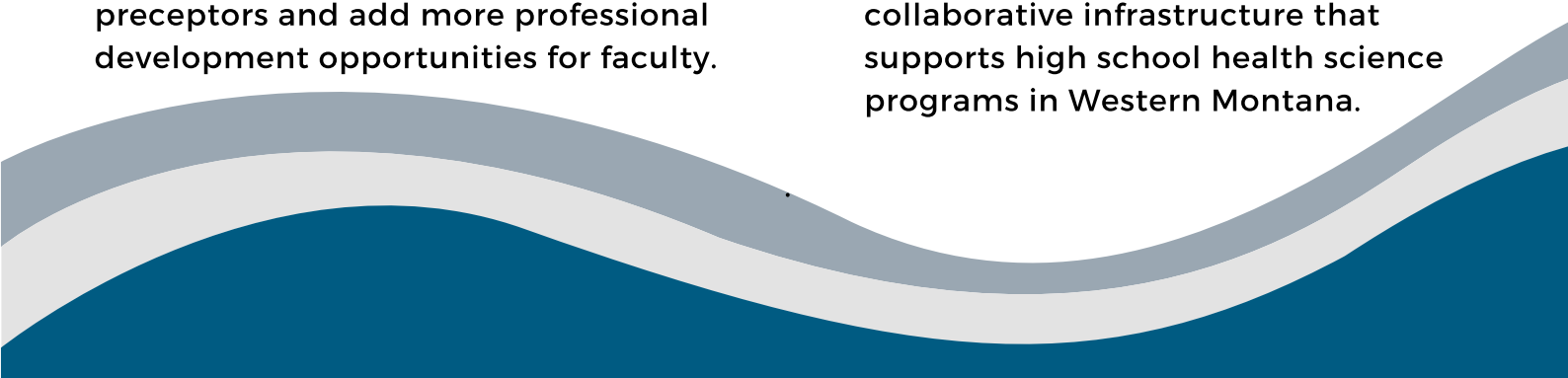
1,666 Participants

50 hours of training provided



Friday Medical Conference	SUD-ODU Behavioral Health Training	Integrated Behavioral Health Summit
1,193 Participants	80 Participants	393 Participants
34 Hours of CME	6 Hours of CME	10 Hours of CME
9/2018-05/2019	04/2019	11/2018

# Looking Ahead to 2019-2020

- **New Director Position**-We are currently looking to replace Barry Kenfield as the Western MT AHEC Director. Barry recently retired to spend more time with family and golfing. Barry was an excellent director and will be greatly missed! The new director will continue to lead the Western MT AHEC office but will also serve as Co-Director of the new MUS IPE Institute.
  - **AHEC Scholars**-The statewide AHEC Scholars program is continuing to enroll healthcare professions students from all healthcare professions areas and to expand enrichment opportunities for the students in the program. The Scholars Program will partner with the new MUS IPE Institute to provide IPE opportunities state-wide.
  - **Montana Pain Conference**-Planning for this conference is underway! The Montana Pain Conference will happen in Butte, MT October 2020.
  - **Friday Medical Conference**-Just wrapped up Fall Semester 2019 presentations and will resume in Spring Semester 2020. Attendance has been great so far this year and we looking to expand the number of healthcare professionals we reach across the state.
  - **WWAMI**- Continues to identify new preceptors and add more professional development opportunities for faculty.
  - **Pre-Med Job Shadow Program**  
Currently looking for more Doctors and Physician Assistants to host job shadowing students. We are also trying to create a schedule for job shadowing opportunities to streamline the sign-up process for students and doctors participating in the program.
  - **Career Awareness:**
    - Recently, HRSA reduced the amount of funds AHEC offices can spend on career awareness activities. Our office feels these activities are a very important aspect for Montana healthcare facilities in providing quality healthcare. We are working to establish strategic funding partnerships to continue our career awareness programs.
    - Expand our current programming to the middle school level. This will include having REACH camps for middle school students and creating a summer camp geared towards middle school students.
    - Add on-campus experiences for high school students to learn about the cross-section of biotechnology, biomedical research, and healthcare.
    - Pilot a new program called Classroom Chats that connects healthcare professionals to 5th-12th grade classrooms via video chat.
    - Obtain NSF funding to plan a collaborative infrastructure that supports high school health science programs in Western Montana.
- 



Connecting students to careers, professionals to communities, and communities to better health.